

# Public Document Pack



[www.sefton.gov.uk](http://www.sefton.gov.uk)

Town Hall  
Trinity Road  
Bootle  
L20 7AE

Date: 18 October 2017  
Our Ref:  
Your Ref:

**Contact:** Debbie Campbell,  
**Contact Number:** 0151 934 2254  
**Fax No:** 0151 934 2034  
**e-mail:** [debbie.campbell@sefton.gov.uk](mailto:debbie.campbell@sefton.gov.uk)

Dear Councillor

## **OVERVIEW AND SCRUTINY COMMITTEE (ADULT SOCIAL CARE AND HEALTH) - TUESDAY 17TH OCTOBER, 2017**

I refer to the agenda for the above meeting and now enclose the following items which were unavailable when the agenda was printed.

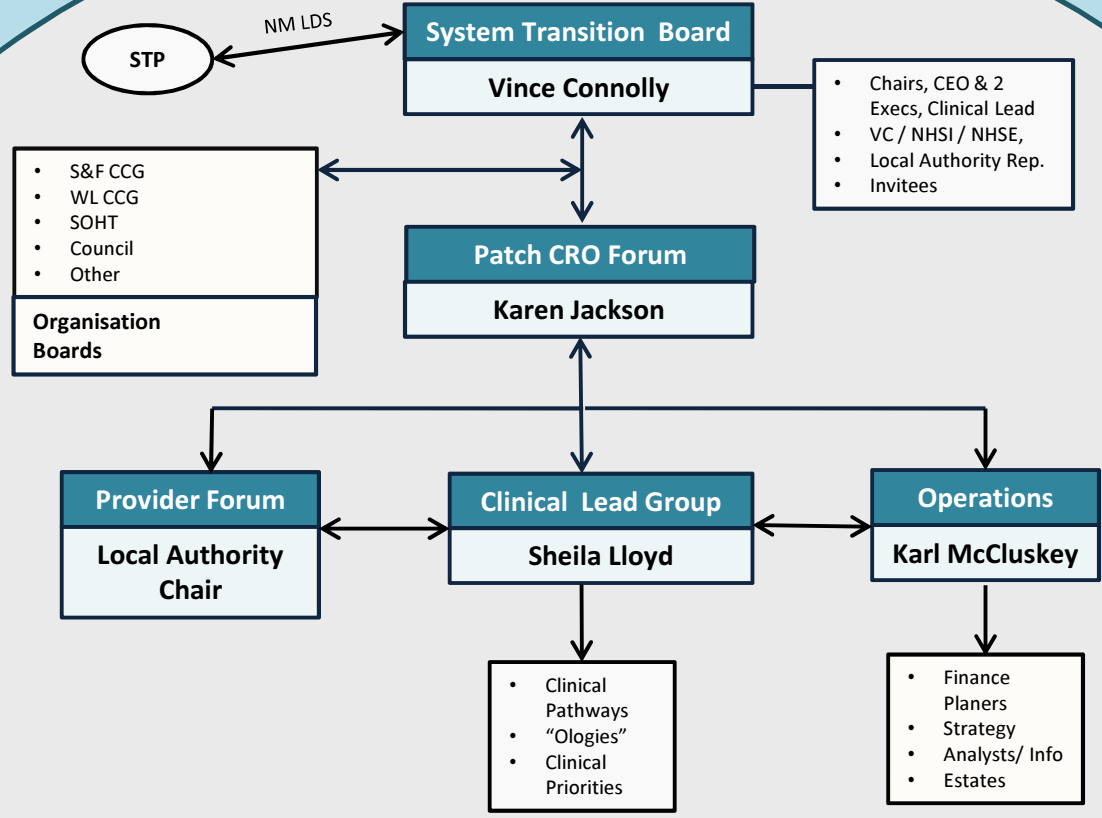
<b>Agenda No.</b>	<b>Item</b>
<b>4.</b>	<b>Southport and Ormskirk Hospital NHS Trust - Update Report</b> (Pages 3 - 4)  Karen Jackson, Interim Chief Executive, Southport and Ormskirk Hospital NHS Trust, to attend.
<b>10.</b>	<b>Cabinet Member Reports</b> (Pages 5 - 6)  Report of the Head of Regulation and Compliance.

Yours faithfully,

Democratic Services

This page is intentionally left blank

# CARE FOR YOU



Scrutiny  
Communication

IT/Technology  
Patient Engagement

# LOCAL POPULATION NEEDS

Draft Version 1  
June 2017

This page is intentionally left blank

**Agenda Item 10**

Appendix B

<b>CABINET MEMBER UPDATE REPORT</b>		
<b>Overview and Scrutiny Committee (Adult Social Care and Health – October 2017)</b>		
<b>COUNCILLOR</b>	<b>PORTFOLIO</b>	<b>DATE</b>
Ian Moncur	Health and Well Being	October 2017

**PARKS AND GREENSPACES**

**World Parks Congress**

The service has been invited to speak at the World Parks Congress to be held in the Wirral in October. This acknowledges the innovation in service delivery (especially in encouraging volunteering) shown in recent years. Delegates will also be offered a half day visit to the borough – especially to see Hesketh Park (because of the links to Joseph Paxton, the designer of both Hesketh Park, and Birkenhead Park- the first public park opened 150yrs ago)

**Community Resilience**

**Community self-management/Market testing of empty buildings**

The service continues to explore new opportunities to facilitate community, sports and other groups taking on self-management of their facilities and features. In addition to existing arrangements, developing discussions are ongoing with a combination of groups and a market test exercise is to be undertaken to hopefully find suitable users for empty buildings (which may include commercial lettings).

**Community Hubs**

Botanic Gardens Community Hub: The Hub has now entered its operational phase with most of its partners now established on-site. As the partners become more established they will seek to channel their efforts into providing positive projects and activities in Botanic Gardens. Current partners include The Community Parks Officers, the Botanic Gardens Community Association, Sefton New Directions, Macmillan Cancer Care, Arden College and The Botanic Gardens Café.

Further works are being developed for new Community Hub concepts throughout the borough.

**Capital schemes**

**Hesketh Park Observatory**

Improvement works have now been completed to the grade II listed observatory building.

**King's Gardens**

The last of the capital works is underway; this sees a new balustrade wall on the lower promenade from the play area to the end of the mini golf and the last of the lighting installed, all seventeen sets of steps repaired and made more accessible to those with disabilities, and a hand rail added to the

Venetian bridge. The project will reach final completion at the end of Dec 17, and the HLF are to make a 'final' site visit in Autumn 17.

### **Benchmarking/ Awards**

#### **Green Flag Award**

The following sites all retained the Award for 2017/18: Botanic Gardens, Hesketh Park, Lord Street Gardens, King's Gardens, Coronation Park, Hatton Hill Park, Derby Park and North Park.

Duke Street Park, Formby achieved the Award for the first time.

The 2018/2019 applications will involve the above, a reapplication for Killen Green Park and a new entry for Bowersdale Park.

#### **Green Flag Community Award**

In 2017/2018 the service assisted several community groups in retaining the Green Flag Community Award: Rotten Row, Southport, St Luke's Church Grounds, North Park Community Garden (involving the Gateway Collective and Ykids), Bridge Inn Community Farm, Formby, Friends of Ainsdale Village Park (who achieved the award for the first time this year), and Edda, also located in Ainsdale.

#### **Britain in Bloom**

This year there were town entries for; Ainsdale, Crosby and Waterloo, Maghull, Melling and Southport. The number of 'It's Your Neighbourhood' Entries (the community led In Bloom system) continues to increase steadily and in 2017 there were 37 Entries for Sefton. Results are to be announced in a ceremony in the Autumn.